



**NEW LONG-TERM CARE HOMES IN MISSISSAUGA
(SPEAKMAN DR.)**

Summary: Community Town Halls

Last Updated: APRIL 2022

RECAP – OVERVIEW

New Health Centre

This development project was initiated by THP, in partnership with Heart House Hospice, to bring **much-needed health care services** to residents of Mississauga and the surrounding region.

- When complete, the new health centre will include:
 - **Long-term care homes with 632 beds**, to provide supportive and specialized care for seniors
 - We currently have the lowest LTC beds per population
 - **12-bed community hospice**, to provide palliative and end-of-life care
 - Mississauga is the largest city without a residential hospice
 - There is increasing demand for end-of-life care
 - **Health Services Building** to advance community-based care
- THP works with Infrastructure Ontario to manage construction and commissioning of the project.
- As announced in June 2021, the completed long-term care homes will be operated by **Partners Community Health**.



Programs & Services

- Total: **632** rooms within a welcoming and homelike environment
- **All bedrooms are private**; semi-private accommodations have shared bathrooms only
- Common spaces, **amenities**, a salon, a café, spiritual care services, and administrative offices
- Access to terraces and gardens; **4 internal courtyards and a main garden**
- Food prepared on site and in serveries on each floor, allowing residents to feel **more engaged and involved** in typical meal time activities, for a **more home-like experience**
- **Infection prevention and control measures** will be incorporated into the homes' design

Programs & Services

In addition to long-term care operated by Partners Community Health, specialized services will also be offered:

- **Behavioural Support Units (2 x 12 beds each)**
 - These units are designed to provide specialized support for seniors with behavioural and psychological symptoms of dementia who require **a specialized care team and physical environment.**
- **A Dialysis Centre***
 - 16 hemodialysis stations to service LTC residents and community members.
- **An Adult Day Program***
 - Offers physical, mental and social stimulation, recreational activities in a group setting **to promote independence and healthy living.**
 - Adult Day Programs support **people living in their own homes** for as long as possible.

LONG-TERM CARE Timeline

Timeline

New Long Term Care Home



Artistic Rendering – Exterior

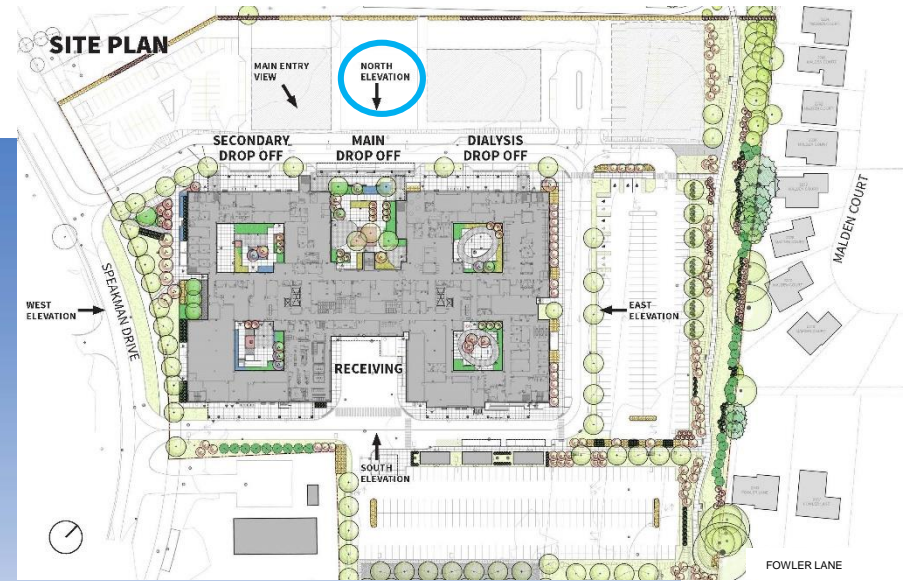
(subject to change)



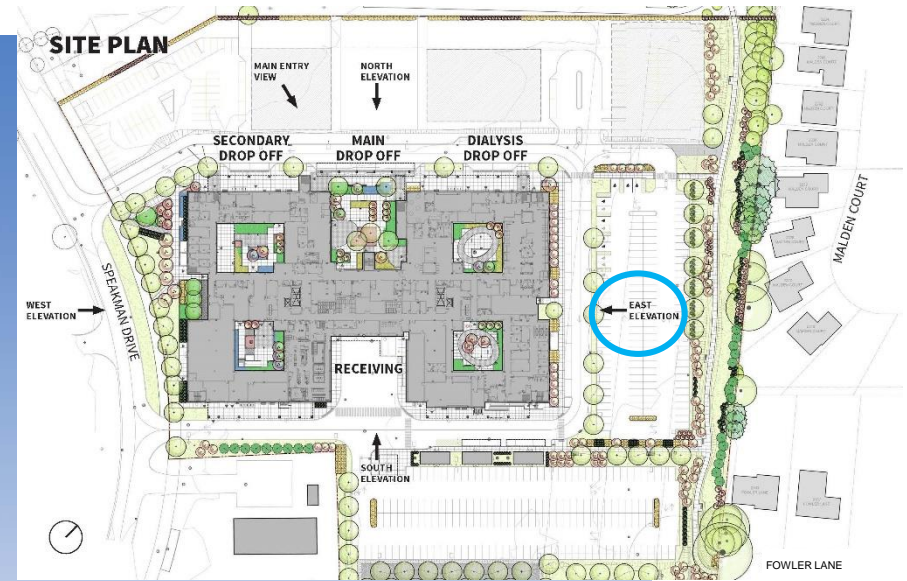
Artistic Rendering – Interior

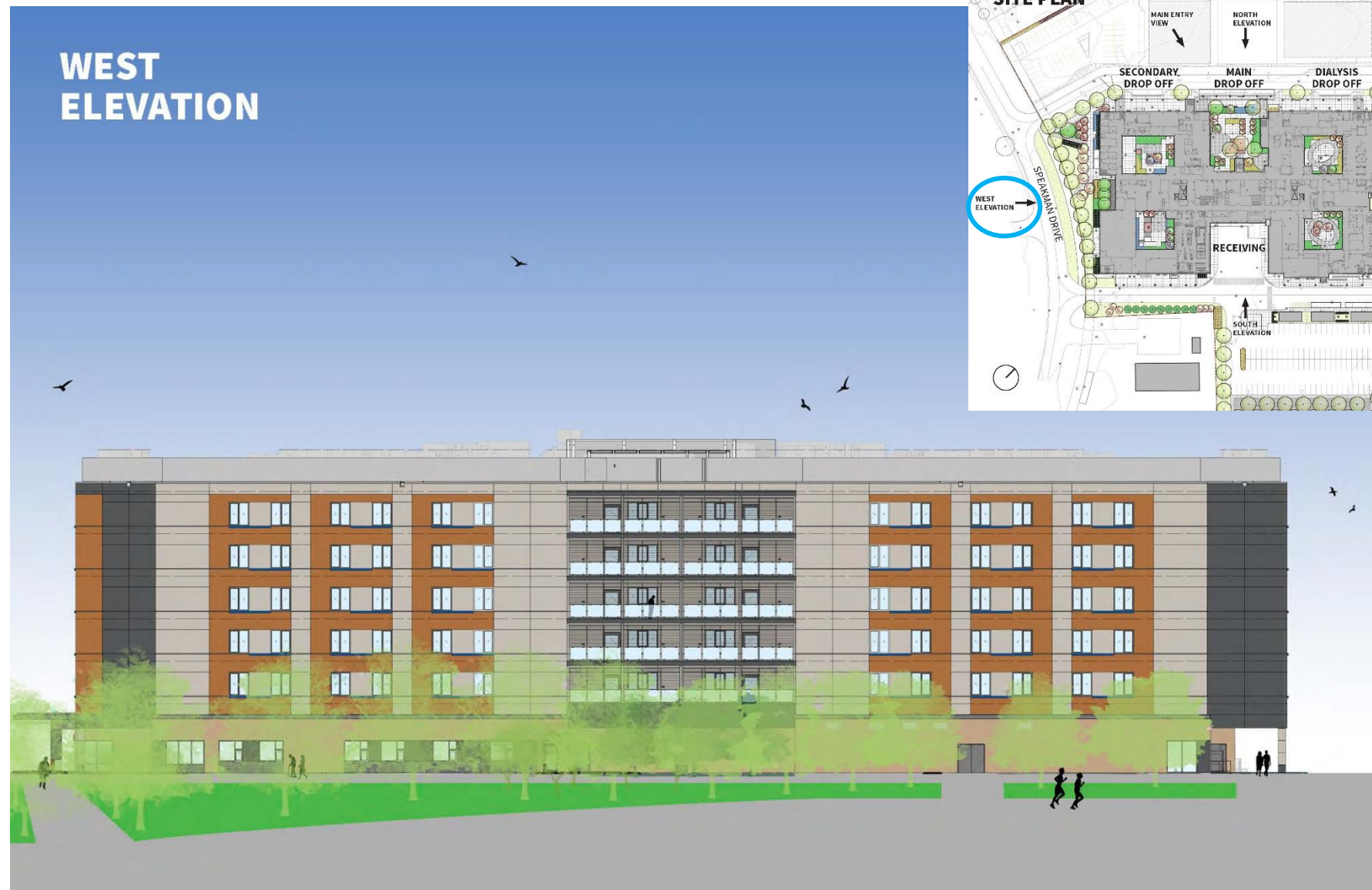
(subject to change)



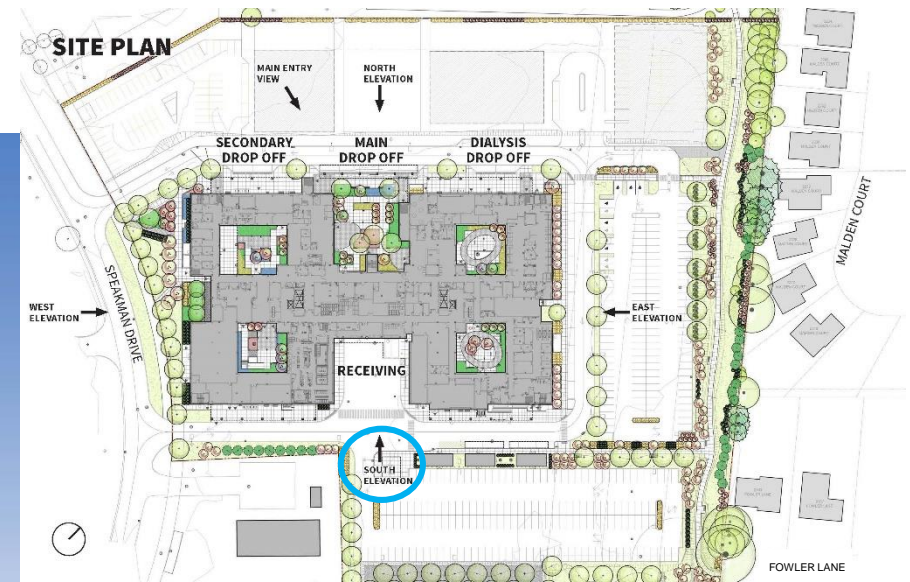


EAST ELEVATION





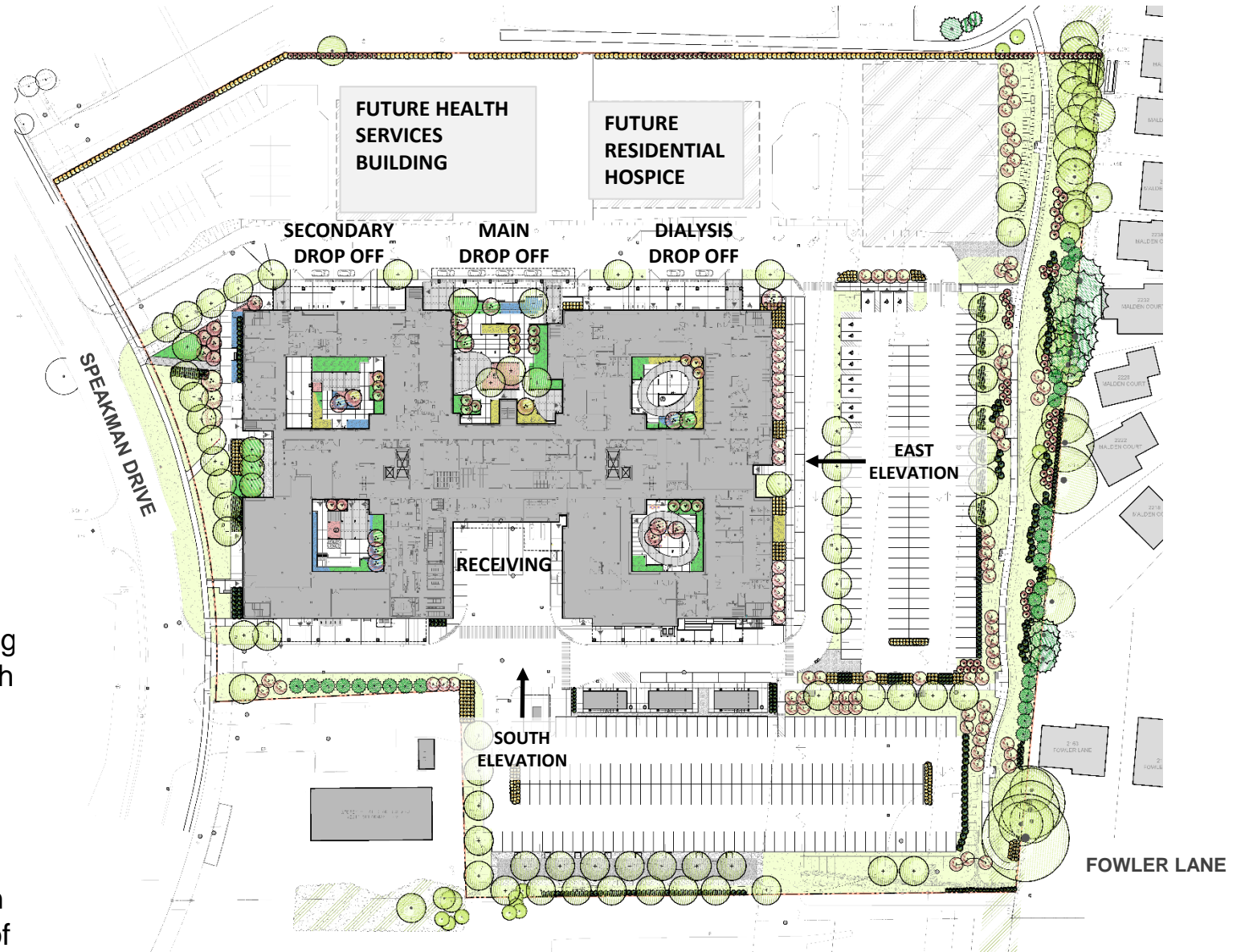
SOUTH ELEVATION



Landscaping

Landscaping reflects feedback from neighbours closest to the property:

- Need a **privacy** buffer
- **Screening to minimize light** spillage from head lights
- Balance **safety & privacy** along pathway
- Increasing planting along property line
- Region of Peel **requires access and setbacks** to water main easements
- **Additional screening for headlights** by extending the coniferous shrub planting to the south limit of the east parking lot
- **Replaced the Serviceberry shrubs at the south end of the lot to Witchhazel shrubs** (for more density and height)
- **Added coniferous shrubs to the buffer** between the parking lot and the walkway at the south end of the parking lot



Thank you.

To join our mailing list, ask questions or share
your comments, please contact us at
public.affairs@thp.ca

Visit our website for more information:
trilliumhealthworks.ca