

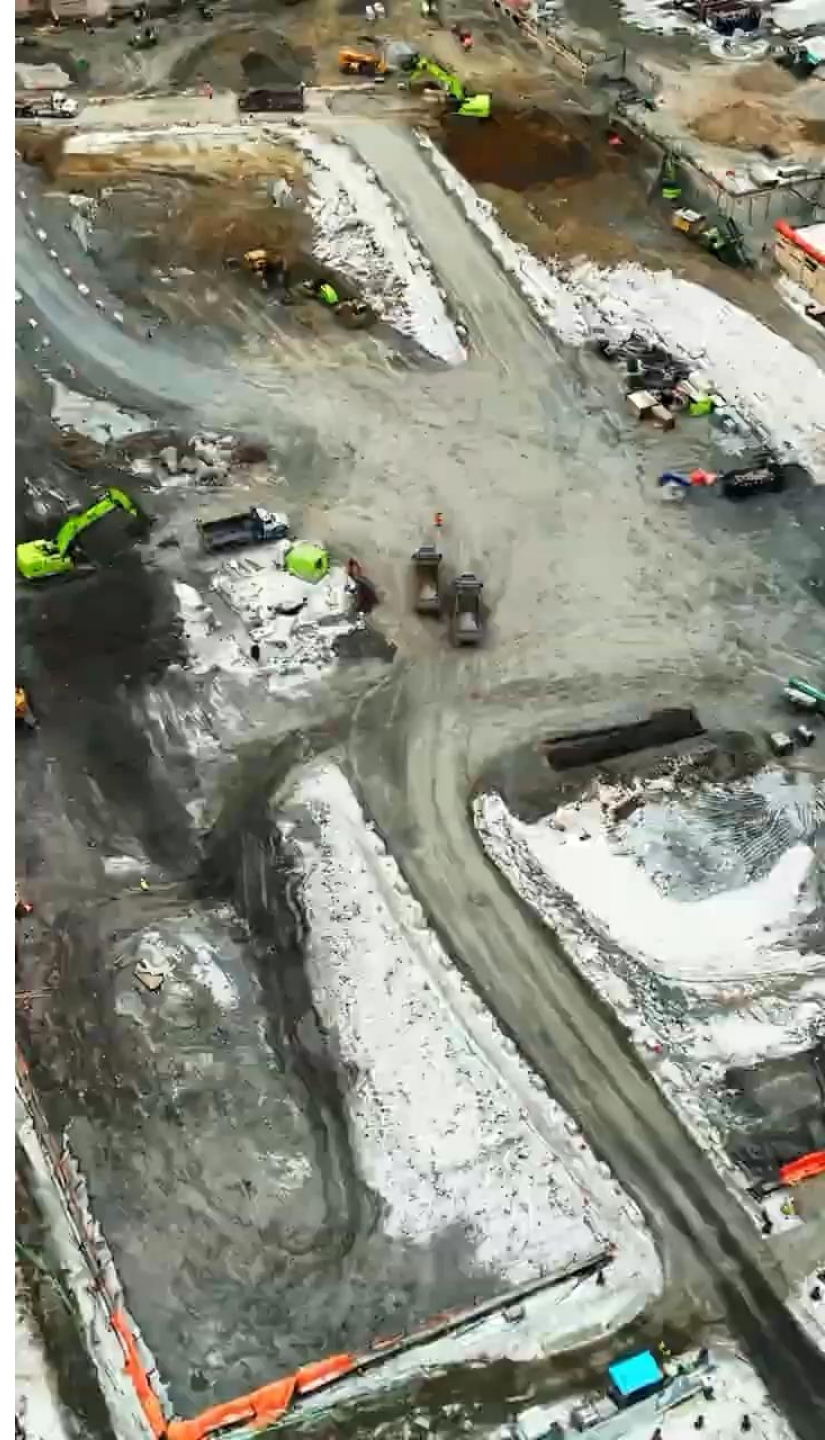
Building the future of health care in Mississauga



Canada's most advanced hospital

The Peter Gilgan Mississauga Hospital and Shah Family Hospital for Women and Children

- **Canada's largest hospital redevelopment**, with 22 storeys, 2.8M sq. ft., 950+ beds, 100 percent private rooms, and a new Emergency Department three times larger than today
- Expands health care services, faster care, more specialized care right here in Mississauga
- Ontario's first purpose-built women's and children's hospital
- State-of-the-art surgical and specialty services
- Leveraging technology and AI



Generational impacts for Mississauga



- Local economic impact of THP grows from \$500M to \$700M per year
- Create thousands of jobs locally
- Construction adds 3,000 jobs at peak
- Majority of materials and all labour sourced locally
- Once complete, the expansion will add 2,800 health professionals
- Strengthens Mississauga's competitiveness and position as a centre of health innovation



Partnering for progress

Thank you for your many years of support

- Historic investment from the city of \$390M
- Zoning and site plan support
- Noise by-law exemption
- Parking garage & site readiness
- 25+ permits and licenses
- Entrance and roadway changes including roundabout at Bronte College
- Helicopter flight path
- Managing overlapping construction work in the area

Engaging our community

In the last year

55,723

Community members engaged

494

Pieces of feedback & questions answered

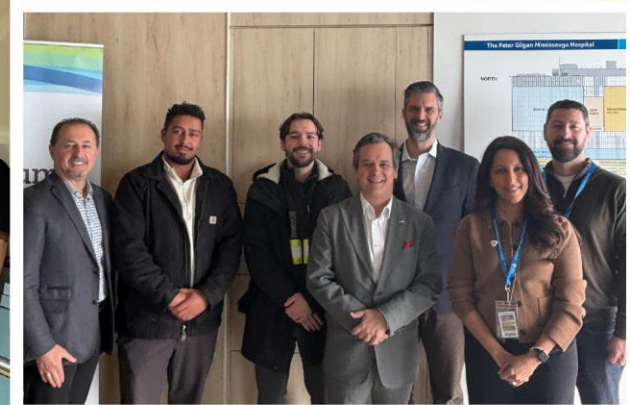
21

Community events

1500+

People toured the experience centre





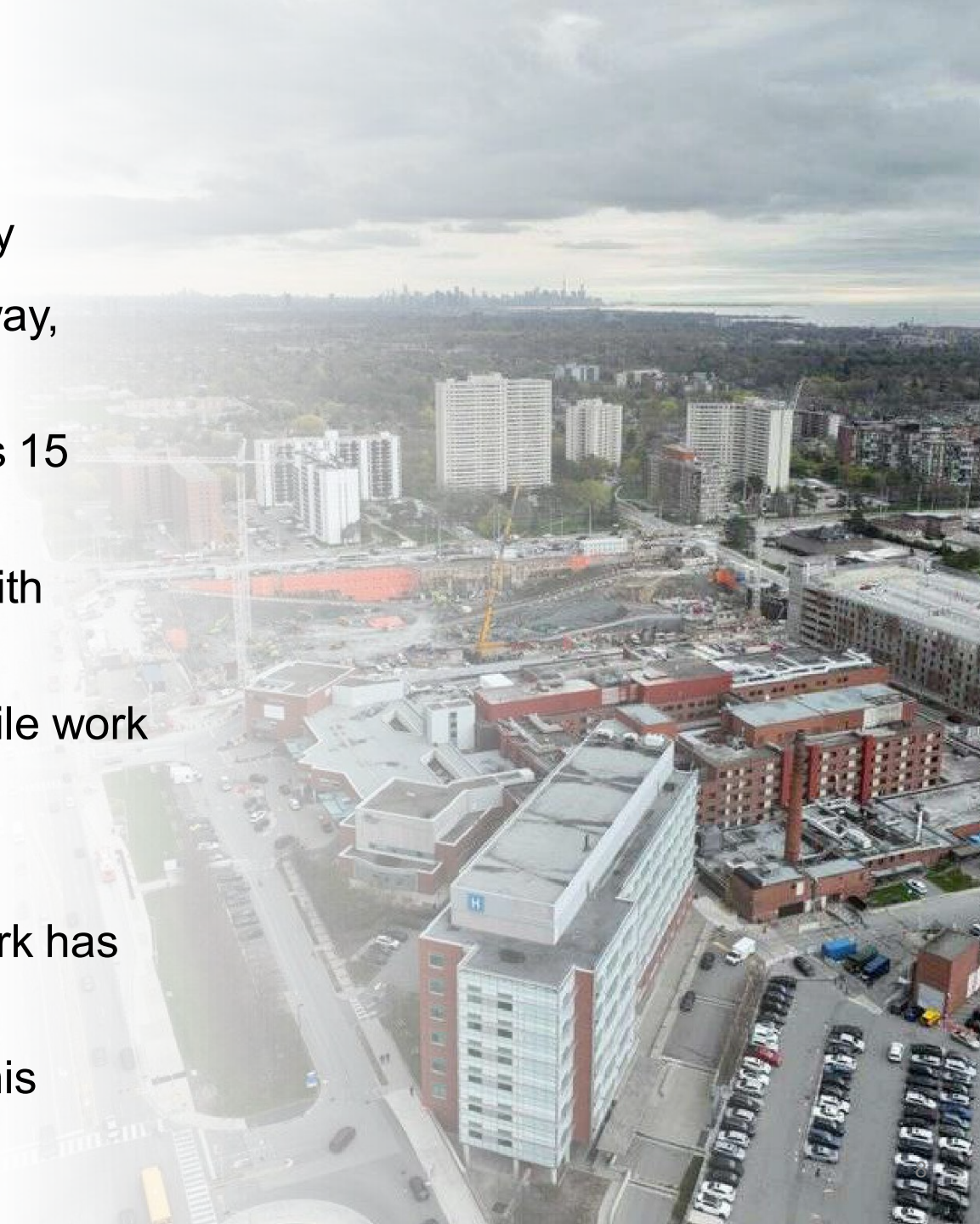
Managing construction

- A highly complex build on an active hospital site along a major transit corridor
- Continuous construction with overlapping stages, multiple shifts, a dedicated traffic team and 24/7 on-site security
- No idling rules help manage exhaust levels, and watering trucks are used to control dust.
- Traffic management procedures in place:
 - avoiding neighbourhood streets
 - truck waiting area
 - real-time dispatching
 - staggered deliveries
 - worker shuttles for construction staff from off-site locations
 - ongoing monitoring



Construction Progress

- Broke ground in June 2025, construction start in July
- Installed a 750m truck waiting area on the Queensway, enabling large scale excavation start
- Excavation is now over 70% complete — as wide as 15 hockey rinks, as deep as a 3-storey townhouse
- 250 trucks arriving to site daily during excavation, with 470,000 m³ material removed from site thus far
- All tieback walls are in place, protecting workers while work below ground continues
- 7 tower cranes have begun arriving onsite
- Concrete foundation, footings, walls and column work has begun
- New roundabout to open off Bronte College Court this summer; will enable access to all entrances



Noise Mitigation Plan

- In June of 2024, the city granted the project a noise by-law exemption
- A comprehensive plan manages noise, traffic, and delivery timing by using quieter equipment, daytime scheduling for higher-impact work, and a sound wall along the truck waiting area
- Continuous monitoring to mitigate noise where possible, supported by strict no-idling and on-site safety controls
- Improvements to sound wall have been made, while ensuring no increase in noise for patients, staff and neighbours



Thank you for your support

