



Trillium HealthWorks

Building a stronger community together

May 6, 2026



Today's Agenda

- 1** Who we are
- 2** How we are building the future of health care
- 3** Construction Updates
- 4** Q&A

Trillium Health Partners: Highest Quality Care for the Mississauga Region

We care for city residents at every stage of life.

- Mississauga is Ontario's third and Canada's seventh largest city.
- Three hospitals – **Credit Valley Hospital, Mississauga Hospital and Queensway Health Centre** – are delivering seamless, people-centred care across a growing and highly diverse community.
- 14 specialized programs advancing innovation, quality, and outcomes, from cancer to cardiac to maternal-child care.
- Team THP leads in research, education, and system innovation, building a healthier, more connected community for all.



Trillium Health Partners (2024/25)

Annual Patient Visits
1.89 million

Births
8,971
#1 IN ONTARIO

Surgeries
69,632
#2 IN ONTARIO

Ambulatory Visits
584,851

Inpatient Admissions
71,919

Inpatient Discharges
71,876

Number of Emergency Visits Each Year

Compared to Toronto Area hospital networks

University Health Network
Sunnybrook Health Sciences
Sinai Health System

242,139
Combined (24/25)

227,237
Excluding UCC (24/25)

Trillium Health
Partners

#1 IN ONTARIO

Challenges facing health care



One of the fastest-growing populations



Aging buildings



Recruitment



People have more complex needs



Wait times



Growing social inequities



Waiting for long-term care

Over the next 20 years, no hospital in Ontario will need more services than Trillium Health Partners.

A Plan for Better Care, Better Health, Better Together

Our roadmap to improve access, experience, and outcomes across Mississauga.

What Matters Most to Our Community

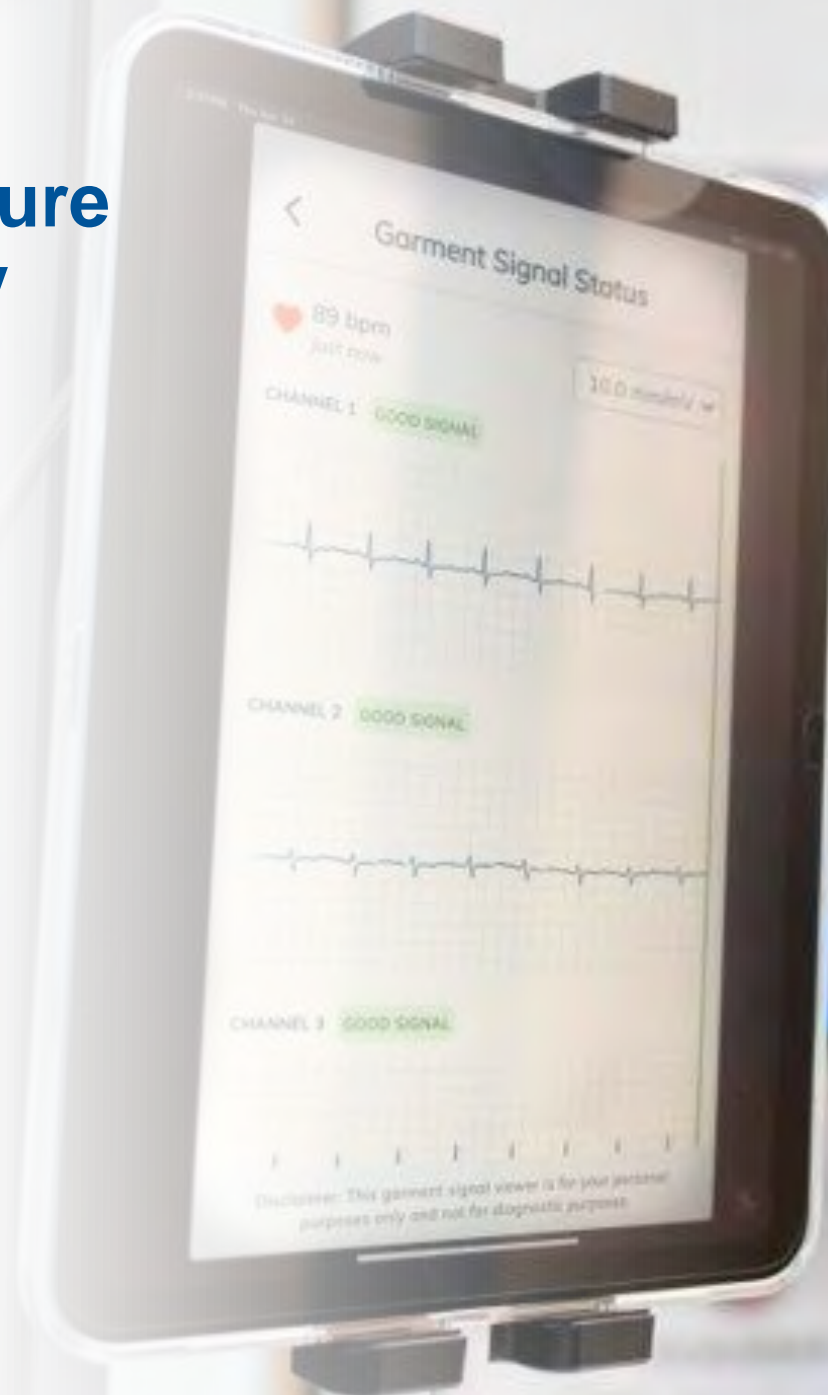
Listening to patients, families, and partners across Mississauga

- **Seamless access to care** with shorter wait times and smoother transitions between services.
- **Care close to home** that is designed around people and communities.
- **Better experiences, together** by empowering patients and families as partners in care.



We have a plan to make sure we can care for you today

- 1 Growing our talented team of clinicians to care for you
- 2 Building more capacity for better access to care
- 3 Doing things differently



People-Centred Care for a Healthier Community

Community care that wraps around individuals, families, and neighbourhoods.

The Gilgan Family Queensway Health Centre

A modern, people-centred home for complex care and rehabilitation

- **9-storey, 600,000 sq. ft. facility with 350+ beds, 100 percent private rooms, and a completed parking structure.**
- Expands capacity and improves experience through a seamless, connected model of rehabilitation and complex care, while existing facilities remain open.
- Built to advance health equity, access and support a healthier community, with occupancy planned for 2029.





The Peter Gilgan Mississauga Hospital

A new kind of health care for a
growing community

- **Canada's largest hospital redevelopment, with 22 storeys, 2.8M sq. ft., 950+ beds, 100 percent private rooms, and a new Emergency Department three times larger than today.**
- Expands health care services, faster care, more specialized care right here in Mississauga, with operations beginning in 2034.
- State-of-the-art surgical and specialty services, leveraging technology and AI.

Shah Family Hospital for Women and Children

Ontario's first purpose-built women's and children's hospital

- Comprehensive, family-centred care including a **pediatric emergency zone, NICU couplet-care suites, and dedicated mental health beds for children and youth.**
- State-of-the-art surgical and specialty services that bring advanced care closer to home for Mississauga families.
- A hub for education, research, and innovation, strengthening partnerships across primary care and public health.



Generational impacts for Mississauga



- Local economic impact of THP grows from \$500M to \$700M per year
- Create thousands of jobs locally
- Construction adds 3,000 jobs at peak
- Majority of materials and all labour sourced locally
- Once complete, the expansion will add 2,800 health professionals
- Strengthens Mississauga's competitiveness and position as a centre of health innovation

Engaging our community

In the last year

55,723

Community members engaged

494

Pieces of feedback & questions answered

21

Community events

1500+

People toured the experience centre



Modern Facilities and Community Hubs that Expand Access

Building spaces that support seamless,
connected, digitally enabled care.

Construction Activities: Scale and Complexity

Delivering the largest hospital build in Canadian history

- A highly complex build on an active hospital site along a major transit corridor.
- Excavation equal to 200 Olympic pools, 15 hockey rinks, and a depth similar to a 3-storey townhouse. Removing total of 470,000 m³ material. Approx. 70% of excavation has been completed.
- Workforce will increase – with up to **3,000 workers** daily.
- Continuous construction with overlapping stages, multiple shifts, and 24/7 on-site security to maintain safety and smooth operations.



Construction Stages



Stage 1 – Foundation to Grade (Began Spring 2025)

Key Activities: Excavation, shoring, and concrete foundations.

Early/Late Work (5:30–7:00 a.m. and 5:00–7:00 p.m.):

- Crews and equipment arriving and setting up (5:30-7:00am).
- Excavators, dump trucks, mobile cranes, forklifts, and concrete pump trucks in use.
- Concrete placement and finishing may extend slightly past 7:00 p.m.



We are here



Stage 2 – Superstructure to Level 11

Key Activities: Structural framing, reinforcing steel and concrete, exterior envelope, and early mechanical/electrical work.

Early/Late Work (5:30–7:00 a.m. and 5:00–11:00 p.m.):

- Workers and equipment arriving and staging (5:30-7:00am).
- Tower cranes, hoisting equipment, mobile cranes, forklifts, and concrete pump trucks active.
- Exterior precast installation.
- Reinforcing steel, concrete placement, and finishing (may extend past 11:00 p.m.).
- Waste removal and hoisting activities.



Stage 3 – Superstructure, Interior and Remaining Work

Key Activities: Completion of structure, exterior envelope, mechanical/electrical systems, and all interior finishing.

Early/Late Work (5:00–7:00 a.m. and 5:00–11:00 p.m.):

- Workers and equipment assembling for start of work.
- Tower cranes, hoisting equipment, mobile cranes, forklifts, and concrete pump trucks active.
- Exterior precast installation.
- Reinforcing steel, concrete placement, and finishing (may extend beyond 11:00 p.m. if required).
- Waste removal and hoisting activities.

New Mississauga Hospital Site Plan



Managing Increased Construction Traffic

A coordinated approach to keep traffic safe

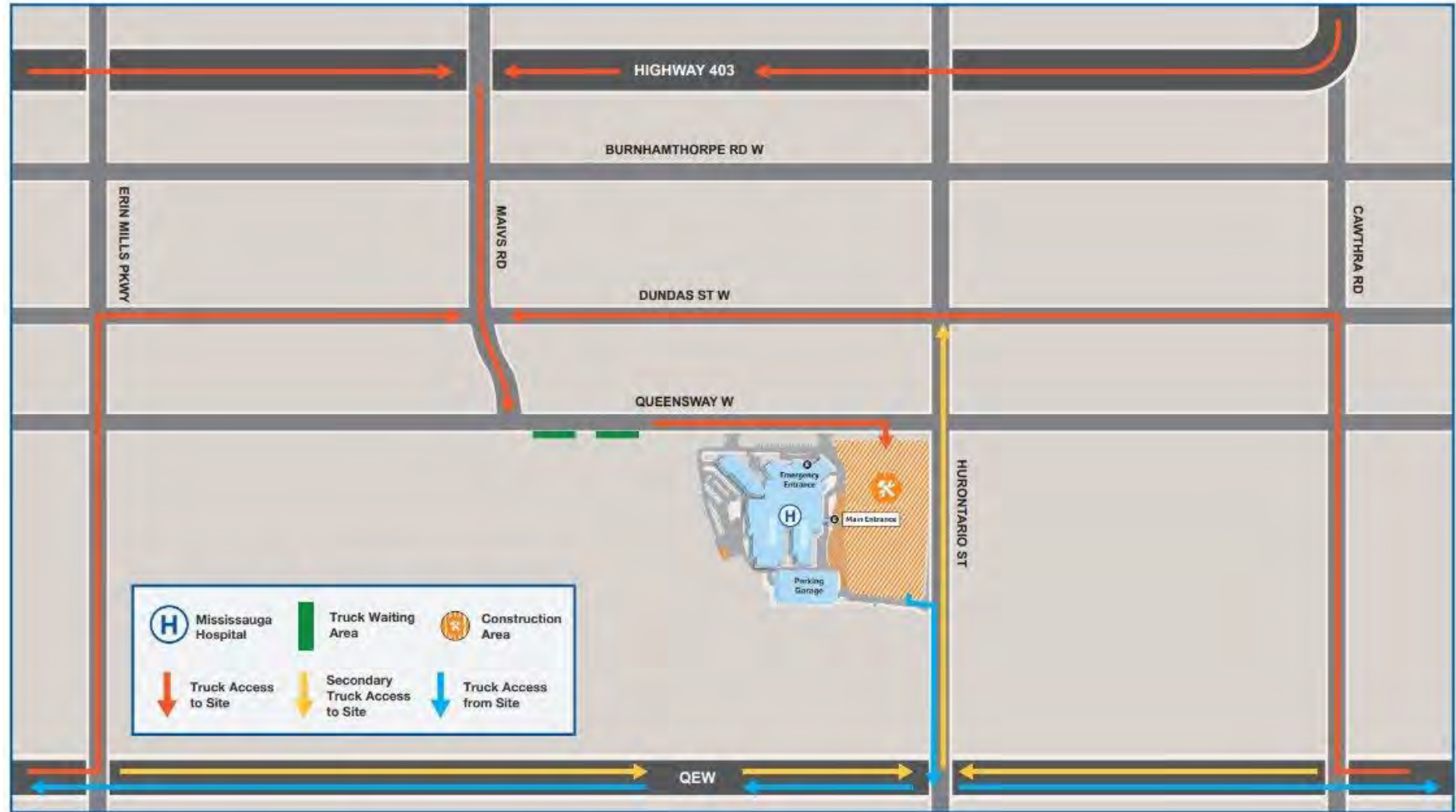
- Largest hospital expansion in Canada requires coordinated truck flow on major roads
- Dedicated team coordinates routes, timing, and site access with City and Regional partners
- Traffic management strategies currently underway:
 - Focus on major arterial roads
 - avoiding neighbourhood streets
 - truck waiting area
 - real-time dispatching
 - staggered deliveries
 - worker shuttles for construction staff from off-site locations
 - ongoing monitoring, ensuring compliance



Overview of Traffic Routes for Stage 1

Routes are on major arterial roads with direct QEW access, avoiding neighbourhood streets; primary route currently in use:

Hwy 403 →
Mavis →
Queensway,
exit via Hurontario.



Truck Waiting Area on Queensway West

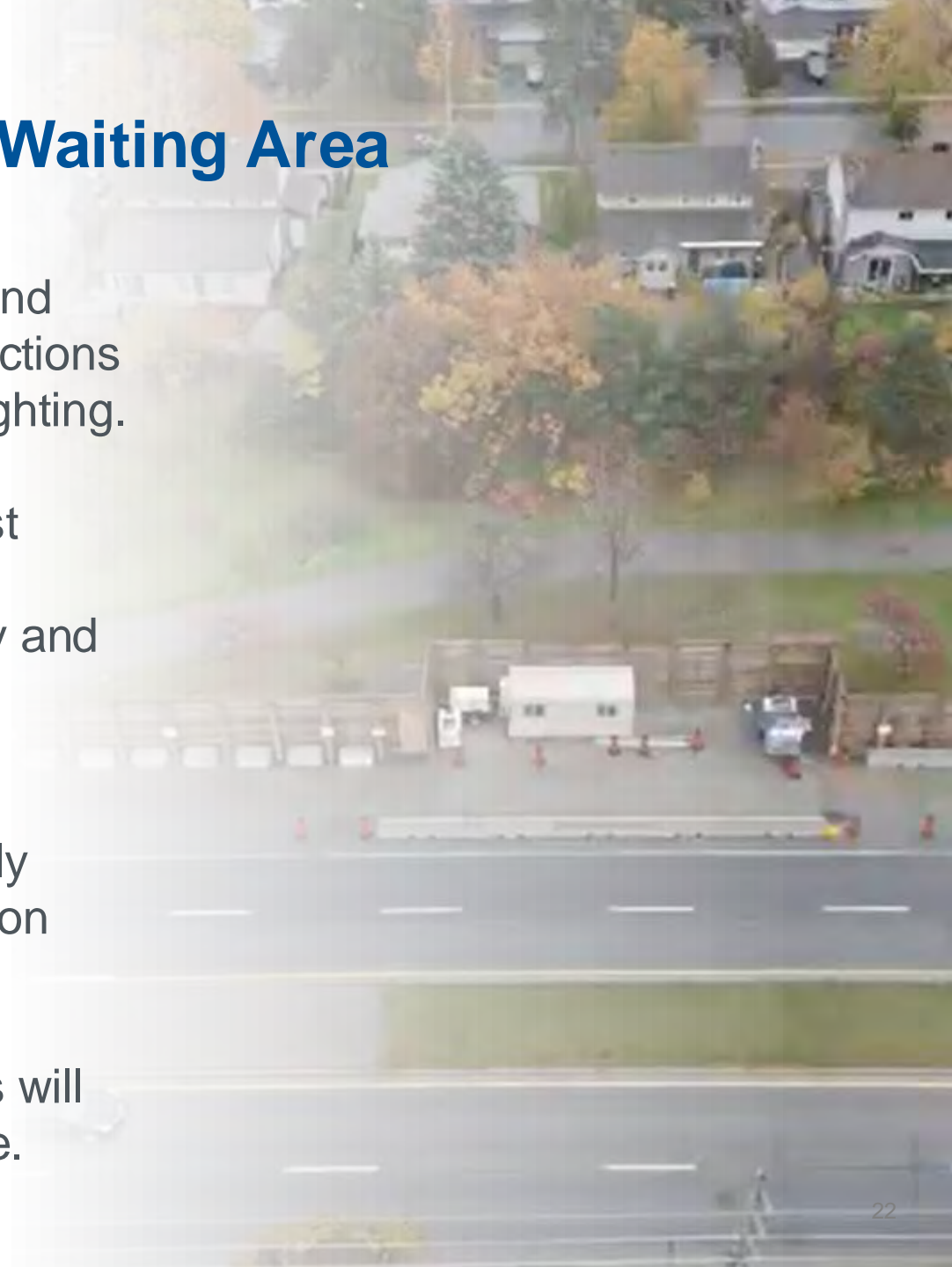
Reducing congestion and improving safety during construction

- A truck waiting area on the south side of Queensway West **can hold up to 75 trucks**, with barriers and flag-person support to keep pedestrians, cyclists, and traffic safely separated.
- This keeps trucks off neighbourhood streets, reduces congestion, and requires the majority of engines to be off while waiting. If the area is full, trucks remain off-site until space is available, preventing on-street queuing. Access to Gordon Dr., Stillmeadow Rd., and Stavebank Rd., remains open.
- Construction began in August and completed in December with traffic returned to normal and no lane closures.



Safety along Sound Wall and Truck Waiting Area

- **Sound Wall improvements:** Following resident feedback, changes were made to increase driver and pedestrian visibility, including removal of angled sections of the wall, new viewing portholes and additional lighting.
- **Traffic and truck safety:** Construction drivers must follow approved routes and safe driving standards. Enforcement on public roads is handled by the City and Police.
- **Restoration and long-term condition:** Roads, sidewalks, bike lanes, and green spaces will be fully restored to municipal requirements once construction ends, and temporary measures will be removed.
- **Safe access and compliance:** Access/exits points will be staffed to ensure safety and enforce compliance.



Noise Mitigation Plan

Reducing disruptions for patients, staff, and neighbours

- A comprehensive plan manages noise, traffic, and delivery timing by using quieter equipment, daytime scheduling for higher-impact work, and a sound wall along the truck waiting area.
- Continuous monitoring to mitigate noise where possible, supported by measures to minimize unnecessary idling and on-site safety controls.
- Improvements to sound wall have been made, while ensuring no increase in noise.
- If conditions change, THP and ED+PCL will reassess and adjust mitigation measures.

Your Voice Heard

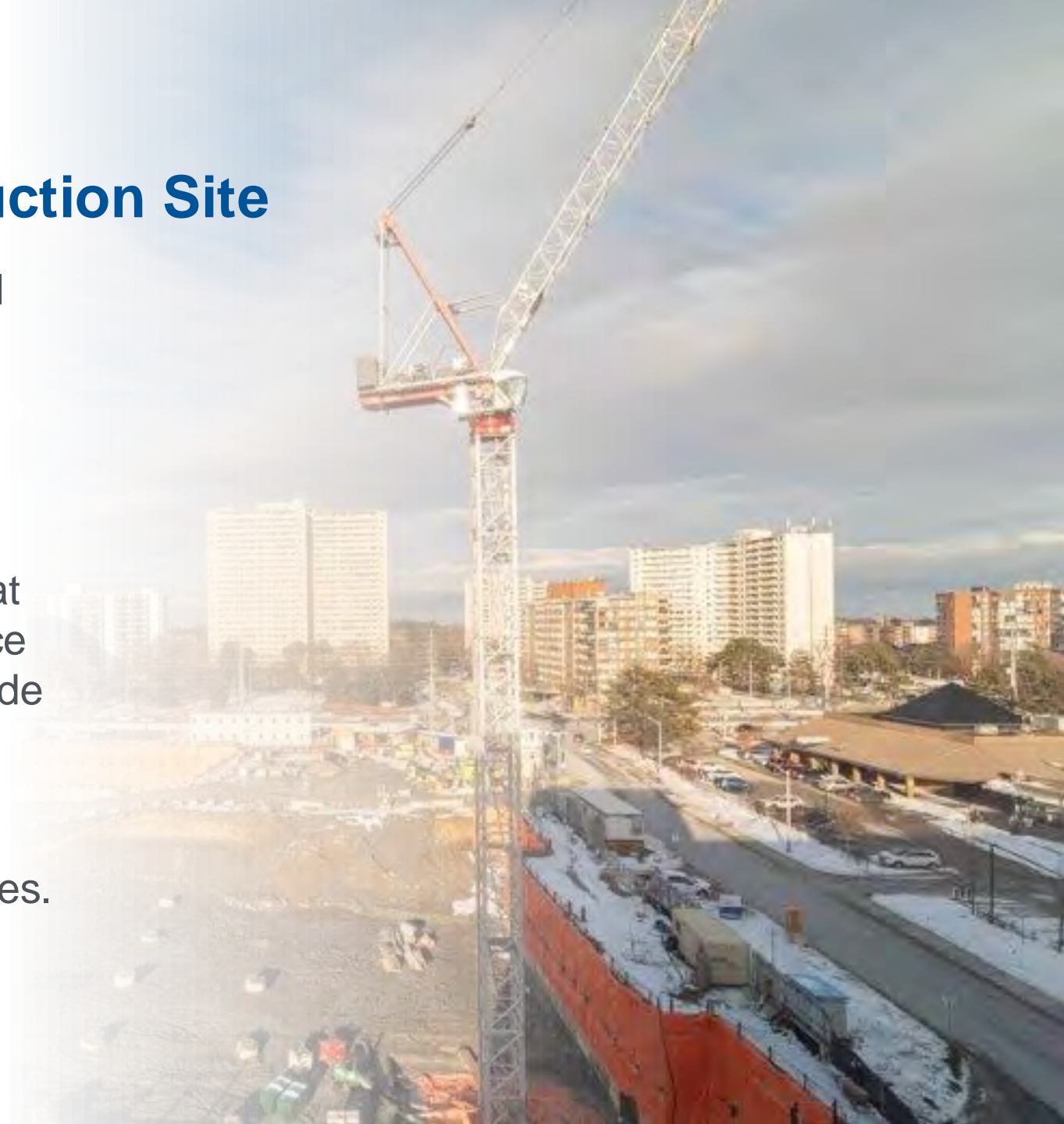
Following resident feedback, Trillium Health Partners, in partnership with ED+PCL Healthcare Partners, made several improvements to increase safety and visibility.

What We Actioned

- Removal of snowbank at Stillmeadow Road and Queensway West and escalation to City of Mississauga for ongoing removal of snowbanks
- Removed angled section of sound wall on Queensway West, installed additional lighting, viewing windows and signage on sound wall
- Mavis Road used as major arterial road for truck routes
- Viewing panels (“portholes”) added to sound wall to improve visibility
- Ongoing collaboration with Metrolinx to inform community members, Team THP and patients about Hazel McCallion LRT construction and its impacts on accessing the hospital
- Additional lighting installed along darker sections of the trail where the sound wall blocks existing streetlight, improving visibility in areas that were previously in shadow.
- Addressed overnight lighting impacts by adjusting construction lighting to reduce light pollution

Look Ahead: Arrival of Cranes at Construction Site

- The Peter Gilgan Mississauga Hospital and Shah Family Hospital for Women and Children is being built by skilled tradespeople using **specialized equipment, including tower cranes.**
- **Seven tower cranes will be erected** at the site, with installation underway since February 2026 and expected to conclude in Fall 2026.
- **Crane lighting will be on timers** to minimise impacts to neighbouring homes.



Look Ahead: Opening of Hospital Roadway

- In **Summer 2026**, the currently closed roadway from Bronte College Court will reopen, allowing drivers to access all hospital entrances.
- A new roundabout will open front of the parking garage's east side.
- This will be the configuration of the hospital's roadways for several years.



Metrolinx Hazel McCallion LRT Construction

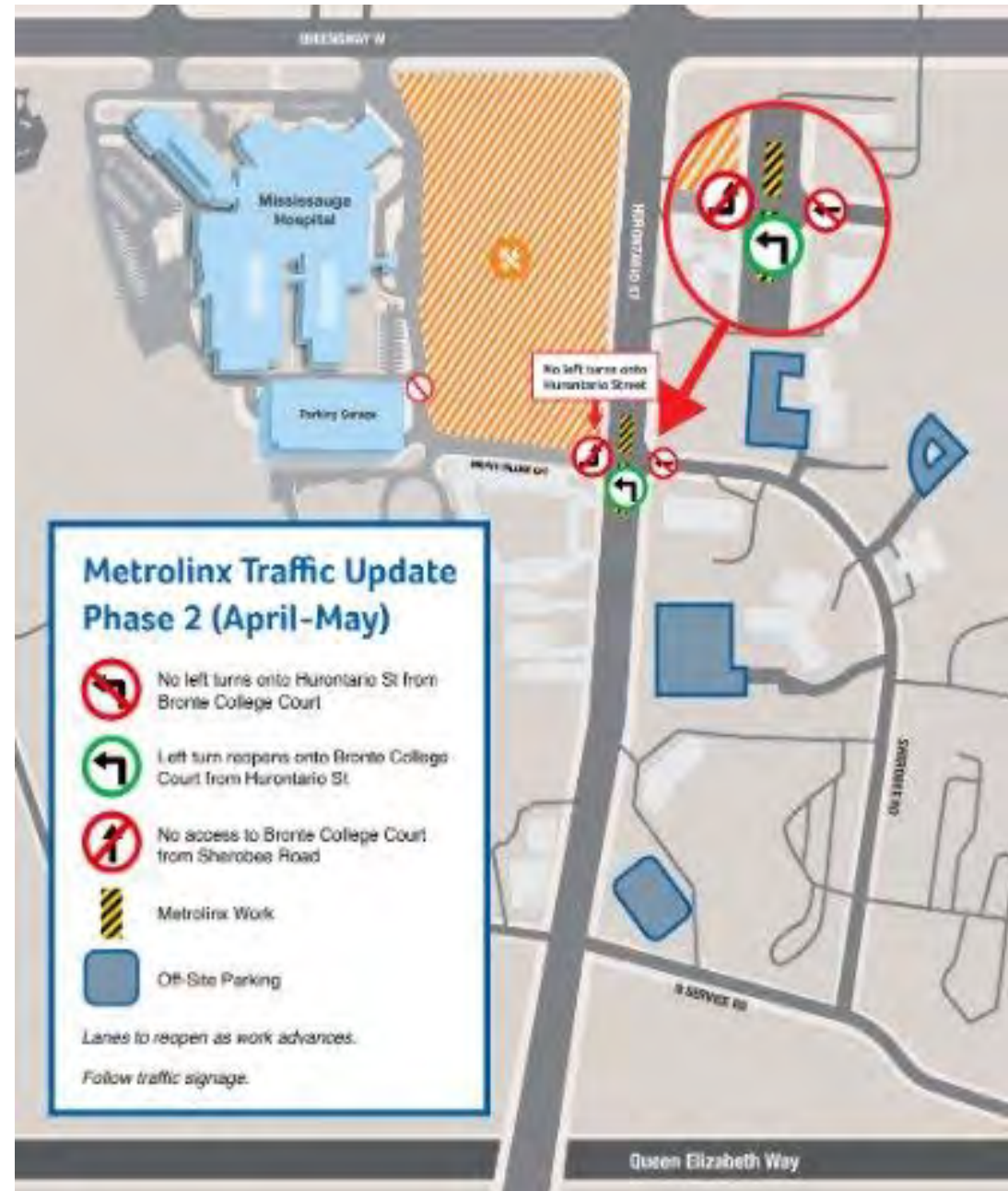
Travelling northbound on Hurontario Street:

- Left turns from Hurontario St onto Bronte College Crt are reopened
- When travelling southbound on Hurontario St, no changes to access Bronte College Crt

Leaving the parking garage from Bronte College Court:

- Vehicles may only turn right onto southbound Hurontario St
- No left turn onto northbound Hurontario St and no access to Sherobee Rd from Bronte College Ct

Traveling westbound from Sherobee Road, no access to Bronte College Court



Our Commitment to Engagement

Open, transparent communication with patients, families, staff, neighbours, and the City of Mississauga, delivered in partnership with EllisDon and PCL.

- Respectful outreach to nearby residents, businesses, and resident associations.
- Clear communications protocol with timely, thoughtful responses.
- Continuous improvement based on community feedback.

How We're Engaging

Community Contact Line

 416-594-2157 |  ask@thp.ca

Project Information & Updates

- TrilliumHealthWorks.ca
- Dedicated webpage for regular updates

Community Engagement

- Engagement sessions for residents and local businesses
- Ongoing coordination with the City to manage impacts

Stay Involved

- Interested in providing feedback on a future Trillium Health Partners e-newsletter?
- Contact: Jacquie.Clancy@thp.ca

Q&A

Thank you for your support

